



Let **UK** Home

1 Bedrooms

Flat

Located in Salford

**£1,000 Per Month**



[pmadmin@letukhome.co.uk](mailto:pmadmin@letukhome.co.uk)

<https://www.letukhome.co.uk/>

01615219812



# 65 Furness Quay Salford

M50 3DL



Let UK Home are excited to offer this spectacular one-bedroom apartment in the heart of Northhill Apartments, the fourth phase of the flagship Fortis Quay development, located on Furness Quay, Salford, Greater Manchester M50.

The flat comprises a spacious open kitchen with a stylishly attached dining area, a magnificent living room leading to a large private balcony with great views, one bright bedroom and one modern bathroom.

Facilities include a beautiful communal courtyard and an on-site gymnasium, providing residents with a modern living experience. Furthermore, residents will also benefit from a concierge and an unrivalled selection of shops, bars, restaurants, and leisure facilities.

Salford Quays Tramp Stop is within walking distance, and Salford Central train station and Manchester Airport can be reached with a short drive. The location of this apartment is great, allowing quick access to the University of Salford, the University of Manchester, Manchester Metropolitan University, Arden University, and more.

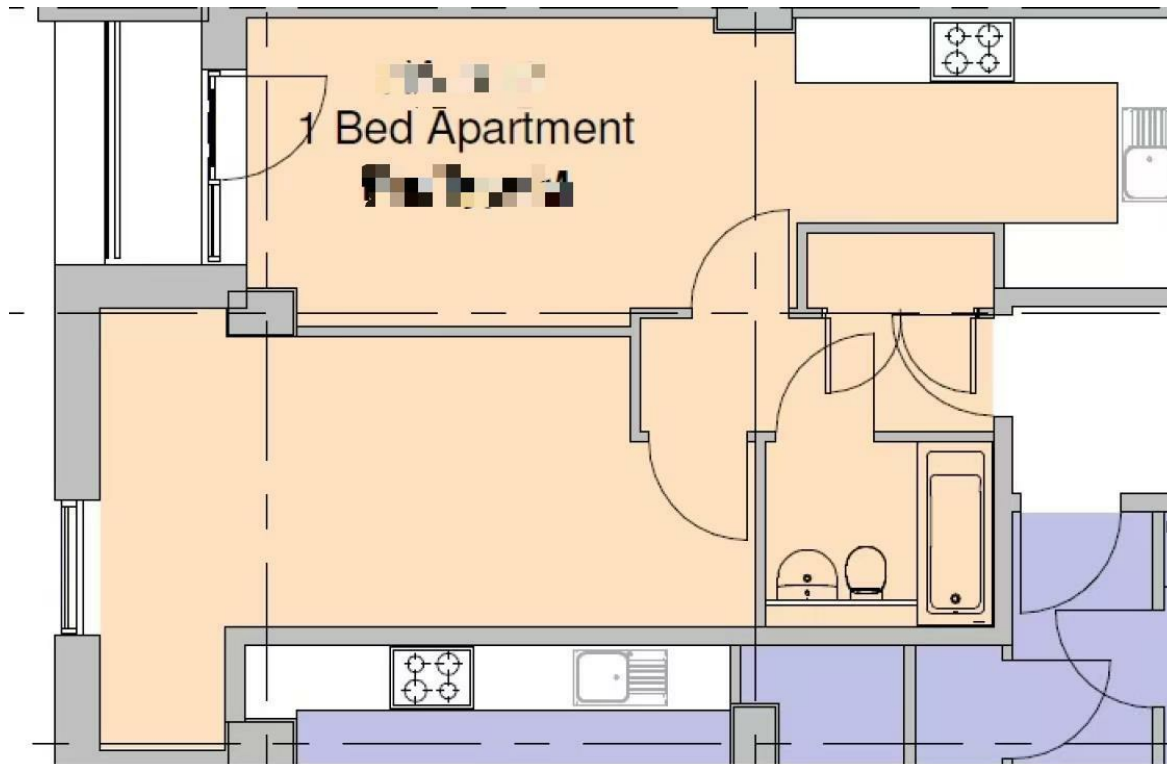
The apartment is located in the Salford Quay area in the west of Greater Manchester, within walking distance of Media City UK and close to Manchester city centre, making it ideally located. There are a large number of restaurants, bars, supermarkets, shopping malls, department stores, banks, etc. in and around Media City, which can meet all the residents' daily consumption needs. Salford Quay also has numerous water sports facilities open to the public, so residents can fully experience the infinite charm of Salford Quay.

# 65 Furness Quay Salford

£1,000 Per Month

- 8th Floor
- Concierge Service
- Close to Transport Links
- EPC Rating: B
- Walkable to Salford Quays Tramp Stop
- 24h Security
- The Gym
- Private Balcony
- Manchester City Centre
- Media City UK





**Total floor area**

**48 square metres**



Let **UK** Home

1/F, St James Tower 7 Charlotte  
Street  
Manchester  
M1 4DZ

01615219812

[pmadmin@letukhome.co.uk](mailto:pmadmin@letukhome.co.uk)

**Council Tax Band: B**

**Local Authority:**

Agents Note: Whilst every care has been taken to prepare these particulars, they are for guidance purposes only. All measurements are approximate and are for general guidance purposes only and whilst every care has been taken to ensure their accuracy, they should not be relied upon and potential buyers/tenants are advised to recheck the measurements.

Energy Efficiency Rating		Current	Potential
Very energy efficient - lower running costs			
(92 plus) A			
(81-91) B		85	85
(69-80) C			
(55-68) D			
(39-54) E			
(21-38) F			
(1-20) G			
Not energy efficient - higher running costs			
England & Wales		EU Directive 2002/91/EC	

<https://www.letukhome.co.uk/>